



## 6 Sabre Avenue Raymond Terrace, NSW

4 1 1

### Great Family Home

Set on 527m<sup>2</sup>, this beautiful four-bedroom home is situated on an elevated block with a private backyard and loads of storage space under the house. Positioned in the heart of Raymond Terrace within walking distance to Muree Golf Club, CBD, Irrawang Public School, and Irrawang High School.

The home boasts two generous living areas and a practical lay out that provides plenty of space for growing families and for entertaining guests.

Key features include:

- Spacious main bedroom has a built-in robe and a reverse cycle air conditioner.
- Bedrooms two and three feature built-in robes.
- Bedroom four is a good size and positioned above the garage.
- Ducted air conditioning throughout.
- Good size laundry.

**Price:** \$636000

**Council Rates:** \$352.60 p/q



**Liam Osborn**

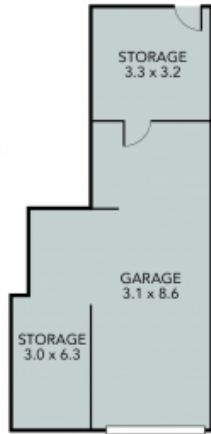
0447 822 460

**Gerard Cunningham**

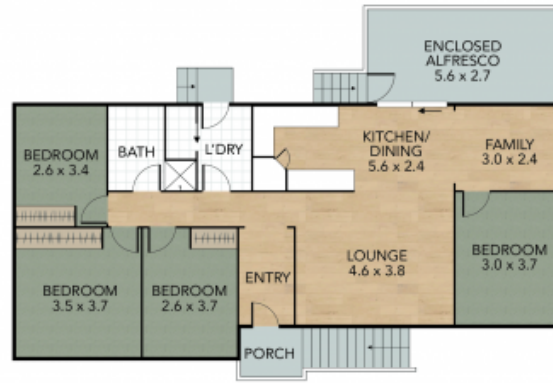
0473 490 423

## 6 Sabre Avenue, Raymond Terrace

4 x  1 x  1 x 



LOWER LEVEL



UPPER LEVEL



SITE PLAN



NOTE: Every precaution has been taken to verify the accuracy of the above details. However, prospective purchasers are advised to make their own enquiries.