



33 Irrawang Street Raymond Terrace, NSW

 3
  1
  1

Excellent location with huge potential

This property presents an exceptional opportunity for developers and first home buyers alike. Situated on a prime development block, this residence boasts numerous features that make it a standout choice in the current market.

Centrally located and just a short walk to the Raymond Terrace Community Pre School, St Brigid's Primary School, Raymond Terrace Public School, Muree Golf Club, Boomerang Park, Men's Shed, and the CBD.

Key features include:

- Three generously sized bedrooms, two equipped with ceiling fans and one featuring an air-conditioner for year-round comfort.
- Large kitchen with plenty of cupboard space and a stove.
- Good size lounge room features a ceiling fan.
- Second toilet outside.
- Expansive 651m2 block, offering plenty of space for outdoor activities and future developo

Price: \$500000

Council Rates: \$400.00 p/q



Joel Osborn




0432 566 245

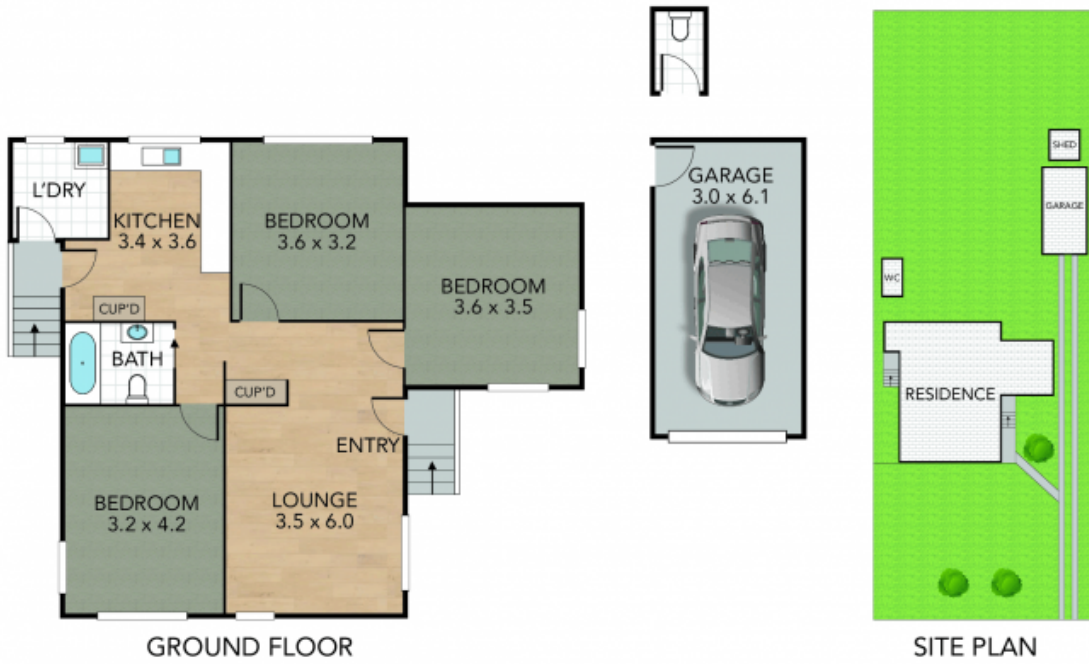
Liam Osborn

0447 822 460

33 Irrawang Street, Raymond Terrace

Internal 83 m² External 568 m² Land Size 651 m²

3 x  1 x  1 x 



NOTE: Every precaution has been taken to verify the accuracy of the above details. However, prospective purchasers are advised to make their own enquiries.