



22 Alton Close Raymond Terrace, NSW

 3  2  2

Great family home

This three-bedroom house is well presented and in a great location. The home boasts two living areas and a practical lay out that provides plenty of space for growing families and for entertaining guests.

It's situated in a quiet street, close to the CBD, schools, parks, and river. It has a spacious backyard, landscaped gardens, and the garage has drive through access for a boat or camper trailer.

Key features include:

- Open plan kitchen includes an upright stove/ oven, rangehood and dishwasher.
- Tiles to entry and kitchen areas.
- Separate lounge room with reverse cycle air-conditioning and ceiling fan.
- Carpet in all bedrooms, lounge, and dining room.
- Separate toilet.




Price: \$585 per week

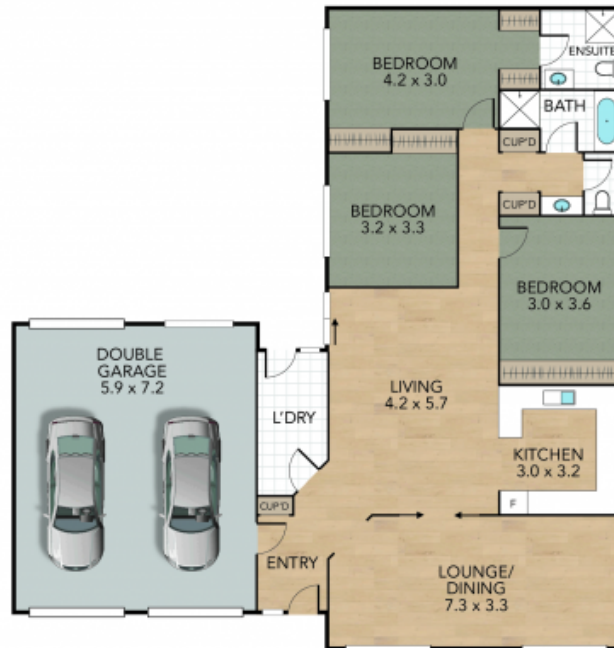


Jasmine Mitchell

22 Alton Close, Raymond Terrace

Internal 134 m² External 45 m² Land Size 594 m²

3 x  2 x  2 x 



NOTE: Every precaution has been taken to verify the accuracy of the above details. However, prospective purchasers are advised to make their own enquiries.