

9 Correa Crescent Raymond Terrace, NSW

 3
  1
  1

A perfect place to start

Whether you're downsizing, buying your first home, or seeking an investment, this three-bedroom home offers a range of features designed for comfortable and low maintenance living. Situated in a great part of town, just a short walk to the bus stop and an easy drive to the CBD and Pacific Highway.

Key features include:

- Three generous bedrooms, each equipped with built-in robes for convenient storage. The main bedroom also has a reverse cycle air conditioner.
- An open plan kitchen, dining, and living room, complete with air conditioning, creating a spacious and inviting atmosphere.
- A centrally located bathroom with toilet, shower, bath, and vanity, providing convenience for all members of the household.
- Still under new home warranty.
- 5kW Solar system.

Price: \$538000

Council Rates: \$226.26 p/q

Water Rates: \$202.99 p/q

Strata Rates: \$136.55 p/q






Gerard Cunningham **Liam Osborn**

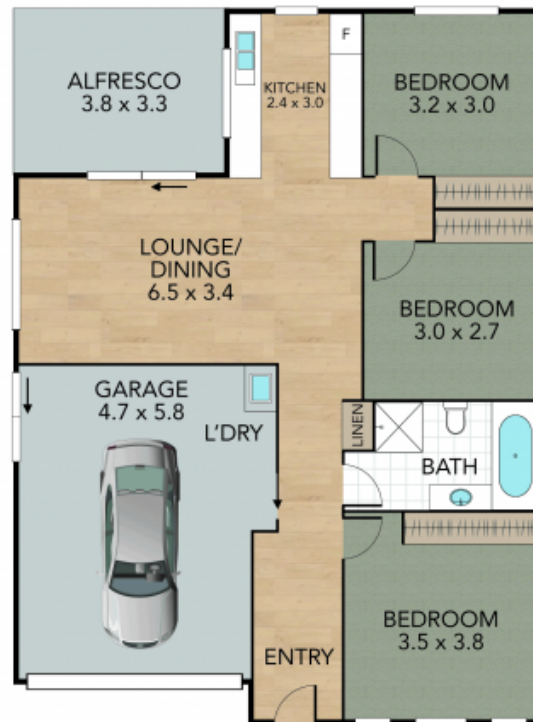
0473 490 423

0447 822 460

9 Correa Crescent, Raymond Terrace

Internal 114 m² External 13 m² Land Size 309 m²

3 x  1 x  1 x 



NOTE: Every precaution has been taken to verify the accuracy of the above details. However, prospective purchasers are advised to make their own enquiries.