



## 22 Alton Close Raymond Terrace, NSW

 3  2  2

### Great family home

This well presented three-bedroom home offers an incredible opportunity for investors, downsizers, and first home buyers. The home boasts two living areas and a practical lay out that provides plenty of space for growing families and for entertaining guests.

Situated in a quiet street, close to the CBD, schools, parks, and river, making it a must-see opportunity for a variety of buyers. It has a spacious backyard, landscaped gardens, and the garage has drive through access for a boat or camper trailer.

Key features include:

- Open plan kitchen includes an upright stove/ oven, rangehood and dishwasher.
- Tiles to entry and kitchen areas.
- Separate toilet.

**Price:** \$650000

**Council Rates:** \$400.00 p/q

**Water Rates:** \$206.35 p/q



**Joel Osborn**




0432 566 245

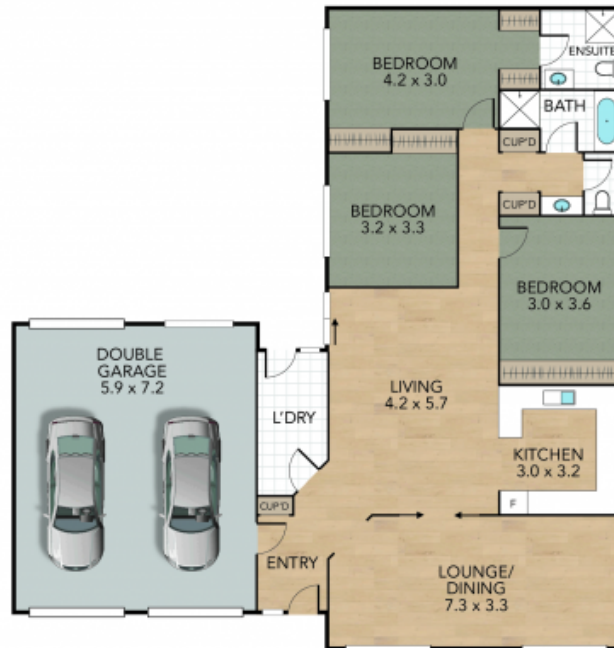
**Liam Osborn**

0447 822 460

# 22 Alton Close, Raymond Terrace

Internal 134 m<sup>2</sup> External 45 m<sup>2</sup> Land Size 594 m<sup>2</sup>

3 x  2 x  2 x 



NOTE: Every precaution has been taken to verify the accuracy of the above details. However, prospective purchasers are advised to make their own enquiries.