

86 Adelaide Street Raymond Terrace, NSW

 3  1  5

Sympathetically updated for modern living!

Located in a central location with great access to public transport, this home built in 1970s is set on 563m2 block and has been completely renovated internally.

With great solid driveway for loads of off-street parking and perfectly planned gardens.

Front entry raised deck and privacy screens make a great perch for morning coffees. Easterly facing.

You'll love the seclusion of the back pergola which overlooks the back yard with vegetable planter boxes ready for planting your summer crops.

Other key features :

- Stylish bathroom, with modern vanity, rainwater shower, suitable for wheelchair access.
- New blinds throughout.

Price: \$600000

Council Rates: \$360.00 p/q

Water Rates: \$206.35 p/q



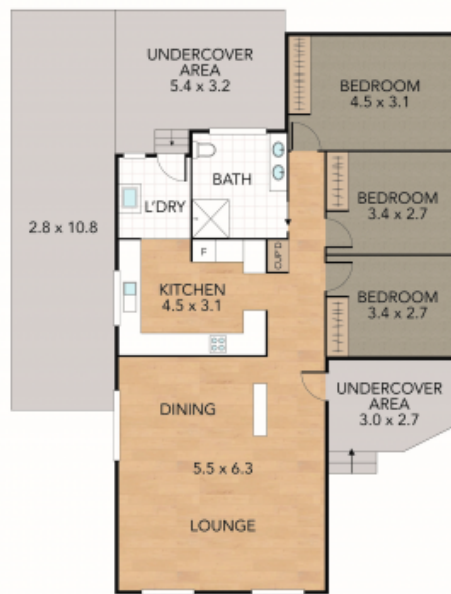
Tracy Jonovski

0418 216 275

86 Adelaide Street, Raymond Terrace

Internal 100 m² External 463 m² Land Size 563 m²

3 x  1 x  3 x 



GROUND FLOOR



SITE PLAN



NOTE: Every precaution has been taken to verify the accuracy of the above details. However, prospective purchasers are advised to make their own enquiries.