



4 Charles Street Raymond Terrace, NSW

 3
  1
  1

Potential Plus

Set on a large 765m² block, this original three-bedroom home has loads of potential and is ready to be renovated, making it a great opportunity for first home buyers and investors. There is also great side access for a future shed or granny flat (subject to council approval).

The short stroll to the CBD, schools, Muree Golf Club and Boomerang Park will also appeal to all buyers.

Key features include:

- ☑ Spacious main lounge room has a reverse cycle air conditioner.
- ☑ Three good size bedrooms have built-in robes.
- ☑ Kitchen includes an upright stove and rangehood with vinyl flooring.
- ☑ Polished timber flooring in the lounge room and bedrooms.
- ☑ Good size laundry.

Price: \$465000

Council Rates: \$371.00 p/q

Water Rates: \$206.35 p/q



Joel Osborn



0432 566 245

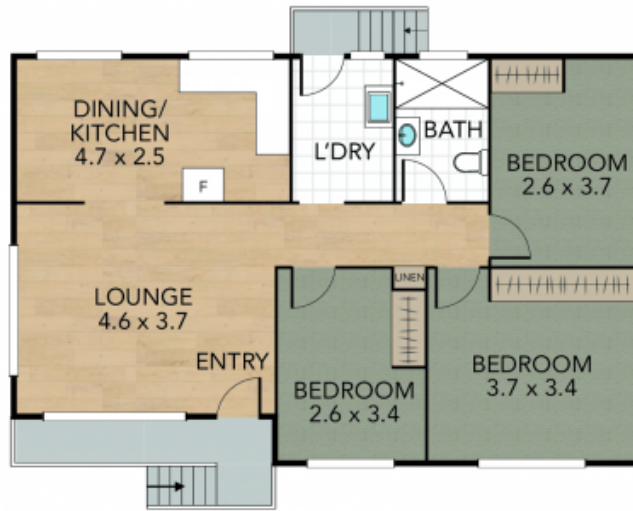
Liam Osborn

0447 822 460

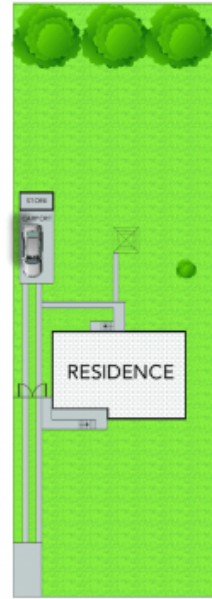
4 Charles Street, Raymond Terrace

Internal 76 m² External 691 m² Land Size 767 m²

3 x  1 x  1 x 



GROUND FLOOR



SITE PLAN



NOTE: Every precaution has been taken to verify the accuracy of the above details. However, prospective purchasers are advised to make their own enquiries.