

## 11/31-33 Glenelg Street Raymond Terrace, NSW

 2  1  1

### Downsizers delight in the heart of town.

This neatly presented two-bedroom home is situated in a highly sought-after unit complex. Its low-maintenance living and tight-knit community makes it an opportunity not to be missed. It boasts a seamless open-plan layout, two generous sized bedrooms with built-in robes, and a single garage with an electric roller door. Being only walking distance from Raymond Terrace CBD, this home and its convenience couldn't be more perfect for downsizers or investors.

More Key features include:

- Good size main bedroom with built-in robe.
- Bedroom two has a built-in robe.
- Linen cupboard in hallway.
- Main bathroom features a shower, vanity, and toilet.
- Open plan kitchen, dining and living room.
- Spacious laundry with second toilet.
- Natural gas supplies instantaneous hot water system, cooktop, heating outlet in the living room.

**Price:** \$475000

**Council Rates:** \$236.00 p/q




**Gerard Cunningham Joel Osborn**

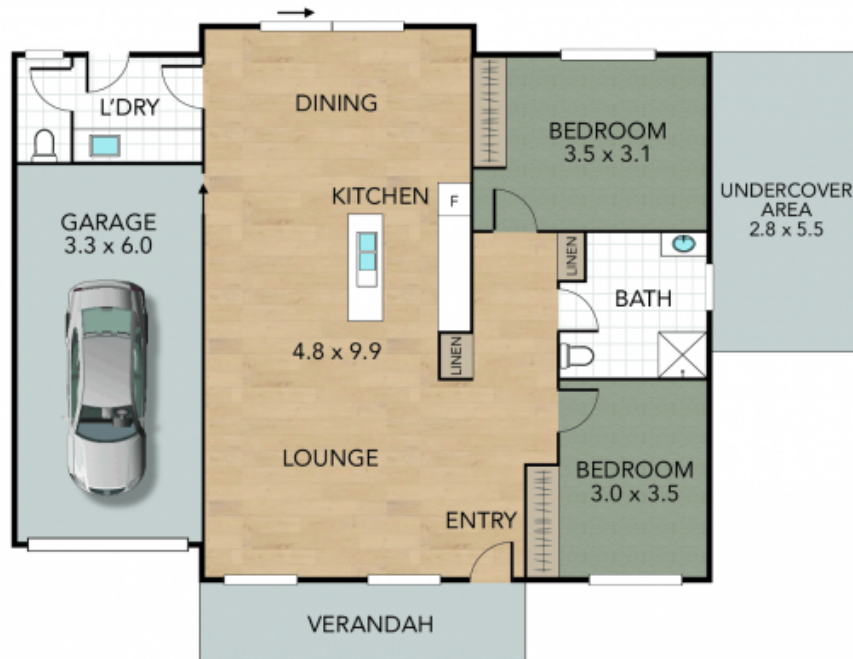
0473 490 423

0432 566 245

# Unit 11 31-33 Glenelg Street, Raymond Terrace

Internal 119 m<sup>2</sup> External 22 m<sup>2</sup> Land Size m<sup>2</sup>

2 x  1 x  1 x 



NOTE: Every precaution has been taken to verify the accuracy of the above details. However, prospective purchasers are advised to make their own enquiries.