



8/12 Jura Street Heatherbrae, NSW

Conveniently Located Multi-Purpose Warehouse Unit
8 = 117 sqm

Location provides easy access to the Pacific Highway.

High clearance warehouse space with good roller door access.

Mezzanine level approximately 34.9sqm. With air conditioned office, ceiling fan, kitchen and bathroom facilities. Built-in filing cupboard.

Two carparking spaces.

Strata \$740.75 quarterly installments.
Strata Capital Works Fund balance \$78,006
Rates \$1,983.65 pa

Price: \$370,000 - \$400,000

Council Rates: \$495.90 p/q

Water Rates: \$0.00

Strata Rates: \$0.00

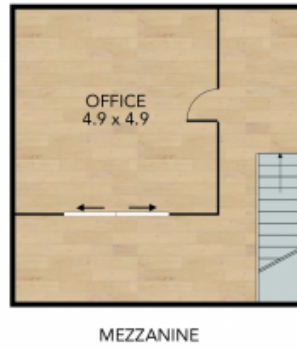
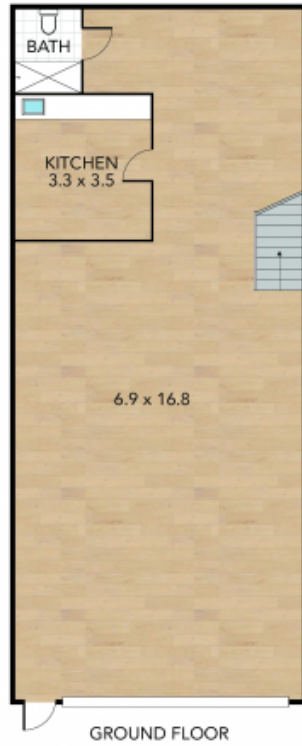


Tracy Jonovski

0418 216 275

8/12 Jura Street, Heatherbrae

Internal 170 m² External m² Land Size m²



NOTE: Every precaution has been taken to verify the accuracy of the above details. However, prospective purchasers are advised to make their own enquiries.