

## 5 Holwell Circuit Raymond Terrace, NSW

 3  1  2

### The perfect start

Set on 585m<sup>2</sup>, this beautiful three-bedroom home is situated in a sought-after part of Raymond Terrace, taking in beautiful views of the reserve and Kittyhawk Park that is located at the rear of the property.

Boasting a large enclosed outdoor entertaining area, modern bathroom and kitchen, this well-presented home provides loads of appeal for a variety of buyers.

Do not miss out on this incredible opportunity.

Key features include:

- Spacious lounge room has a reverse cycle air conditioner and ceiling fan.
- Carpet in all bedrooms.
- Spacious laundry.
- Large sliding glass door in the dining room, opens to the enclosed outdoor entertaining

**Price:** \$627000

**Council Rates:** \$383.00 p/q

**Water Rates:** \$188.75 p/q



**Liam Osborn**



0447 822 460

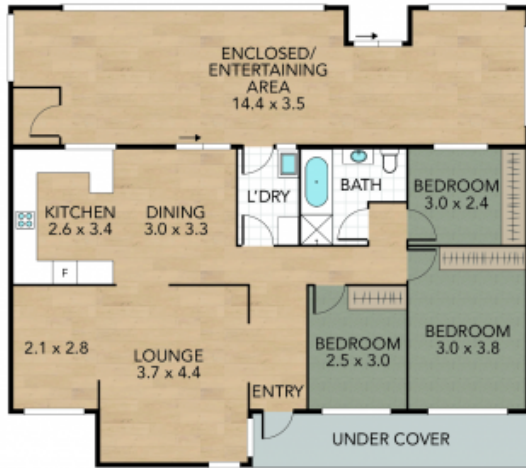
**Joel Osborn**

0432 566 245

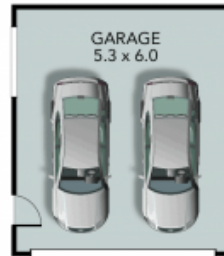
# 5 Holwell Circuit, Raymond Terrace

Internal 135 m<sup>2</sup> External 450 m<sup>2</sup> Land Size 585 m<sup>2</sup>

3 x  1 x  2 x 



GROUND FLOOR



SITE PLAN



NOTE: Every precaution has been taken to verify the accuracy of the above details. However, prospective purchasers are advised to make their own enquiries.