

20/22 Chifley Drive Raymond Terrace, NSW

 2  1  1

Tucked away in a quiet location, on a flat block with stunning reserve views from

This very comfortable two-bedroom unit is perfect for people wanting to downsize or get into the property market. This unit has a new kitchen with a Balini 600mm oven, glass cooktop and plenty storage solutions and bench tops space.

Key features:

- The bedrooms feature built-in robes and main bedroom with a ceiling fan.
- Linen cupboard.
- Spacious living area with reverse cycle air conditioner.
- Tidy kitchen with great storage.
- 2nd toilet downstairs in laundry

Price: \$352,000

Council Rates: \$209.00 p/q

Water Rates: \$170.55 p/q






Tracy Jonovski

0418 216 275

20/22 Chiffley Drive, Raymond Terrace

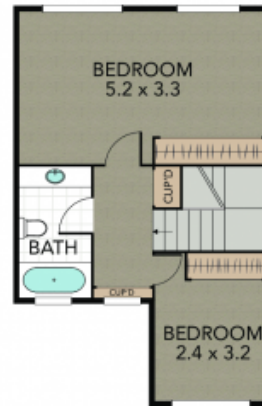
Internal 88 m² External 16 m² Land Size m²

2 x  1 x  1 x 



CARPORT
3.0 x 4.4

GROUND FLOOR



FIRST FLOOR



NOTE: Every precaution has been taken to verify the accuracy of the above details. However, prospective purchasers are advised to make their own enquiries.