



8/24 Bowman Drive Raymond Terrace, NSW

 2
  1
  1

Two-bedroom unit in quiet secure location

Tucked away in a quiet location, on a flat block with reserve views at the rear. This very comfortable two-bedroom unit is perfect for people wanting to downsize or get into the property market. This unit has a new kitchen with 600mm Chef oven, glass cooktop and stunning diamond gloss bench tops.

Key features:

- The bedrooms feature built-in robes and ceiling fans.
- Linen cupboard.
- Spacious living area.
- Tidy kitchen with great storage.
- Private backyard with a covered sitting area.
- Single lock up garage with auto roller door and internal access.
- Great fencing.

Price: \$410000

Council Rates: \$219.00 p/q

Water Rates: \$170.55 p/q



Tracy Jonovski




0418 216 275

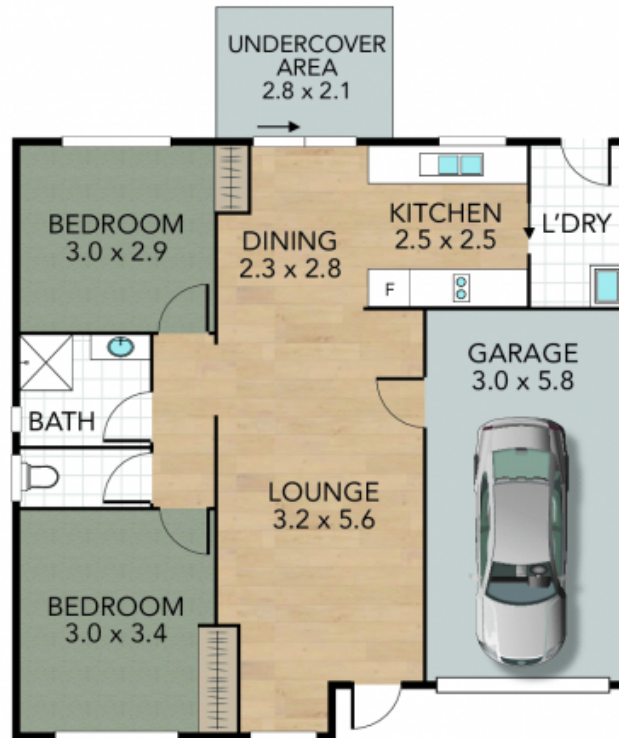
Liam Osborn

0447 822 460

8/24 Bowman Drive, Raymond Terrace

Internal 86 m² External 6 m² Land Size m²

2 x  1 x  1 x 



NOTE: Every precaution has been taken to verify the accuracy of the above details. However, prospective purchasers are advised to make their own enquiries.