



19 Lemongrass Street Chisholm, NSW

4 2 2

A real family affair

Presented to please, this beautiful home is situated in a sought-after part of Chisholm, offering a convenient floor plan that provides both space and functionality.

This well-designed home is perfect for entertaining, with three living areas, an alfresco area and a large yard for the kids to run around. It also has plenty of space to add side access on the right-hand side of the home.

All prospective buyers will benefit from its proximity to St Bede's Catholic College, St Aloysius Catholic Primary School, Tillys Play & Development Centre, new Maitland Hospital, bus stops and Green Hills Shopping Centre.

Key features include:

- Wide tiled front entry.
- Open plan kitchen, living and dining room opens to the alfresco area. The kitchen featur

Price: \$850000



Liam Osborn




0447 822 460

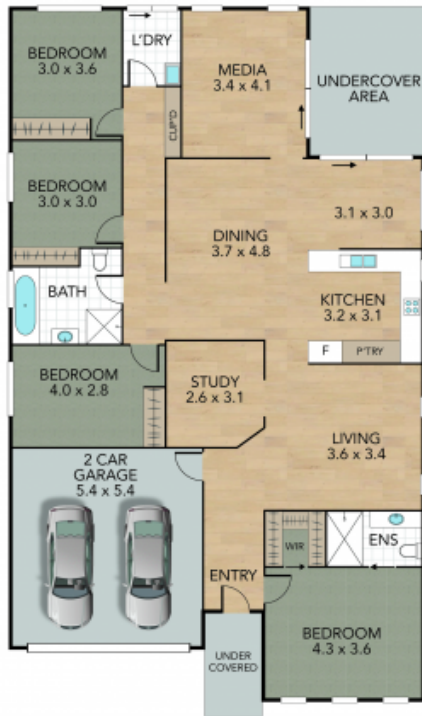
Joel Osborn

0432 566 245

19 Lemongrass Street, Chisholm

Internal 185 m² External 445 m² Land Size 630 m²

4 x  2 x  2 x 



GROUND FLOOR



SITE PLAN



NOTE: Every precaution has been taken to verify the accuracy of the above details. However, prospective purchasers are advised to make their own enquiries.