

3 Beaton Avenue Raymond Terrace, NSW

 4
  2
  2

Spectacular family home

This well presented family home is perfectly located on a 605 square metre corner block of land, which is on a bus route that provides convenient access to nearby schools and shopping centre. It is also a short walk to Kittyhawk Park which has been recently upgraded.

This is a wonderful opportunity for growing families or investors to secure a magnificent, well-presented 4 bedroom, 2 bathroom home in the highly sought after part of Raymond Terrace.

Key features include:

- The main bedroom has a large walk-in robe, ceiling fan and ensuite with shower, toilet, and vanity.
- The three remaining bedrooms have ceiling fans, carpet, and built-in robes.
- Media room has carpet and ceiling fan.

Price: \$720000

Council Rates: \$372.00 p/q

Water Rates: \$188.75 p/q



Joel Osborn

0432 566 245

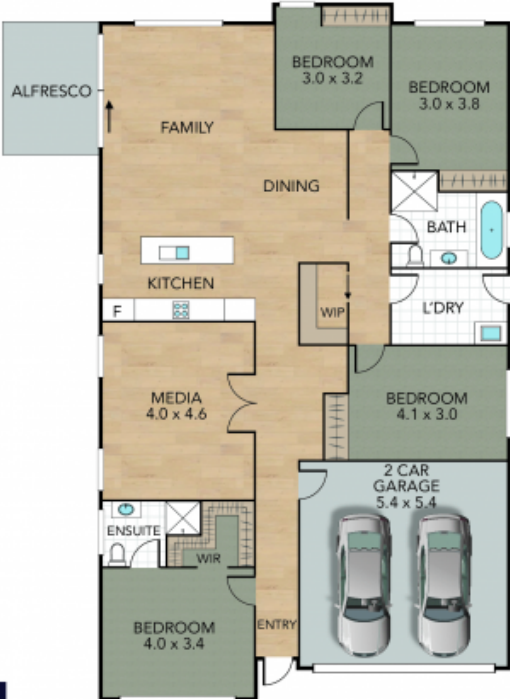
Liam Osborn

0447 822 460

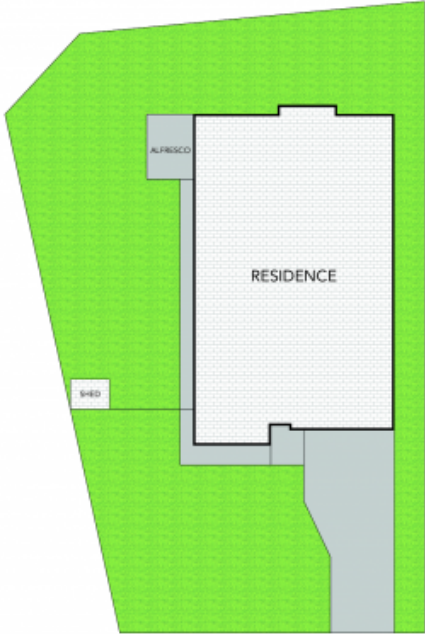
3 Beaton Avenue, Raymond Terrace

Internal 191 m² External 413 m² Land Size 604 m²

4 x  2 x  2 x 



GROUND FLOOR



SITE PLAN



NOTE: Every precaution has been taken to verify the accuracy of the above details. However, prospective purchasers are advised to make their own enquiries.