

**14/4 Mosman Place Raymond Terrace, NSW**

3   1   2

**Spacious unit in a central location**

This three-bedroom unit is situated just walking distance to schools, parks, Lakeside Shops, and the Tavern. The two-storey unit has good size bedrooms with a new bathroom upstairs. The open plan dining and living room downstairs has a double sliding door out to the backyard where you can utilise the common area and access the reserve behind the complex.

All prospective buyers will benefit from its proximity to Newcastle, Maitland, Pacific Highway and Airport, making it a sought-after place to live or invest.

Downstairs features include:

- The functional kitchen includes upright stove, rangehood and plenty of cupboard space.
- Great size living and dining room.
- Spacious laundry with extra toilet.

**Price:** \$400000

**Council Rates:** \$271.00 p/q

**Water Rates:** \$284.50 p/q



**Liam Osborn**

0447 822 460

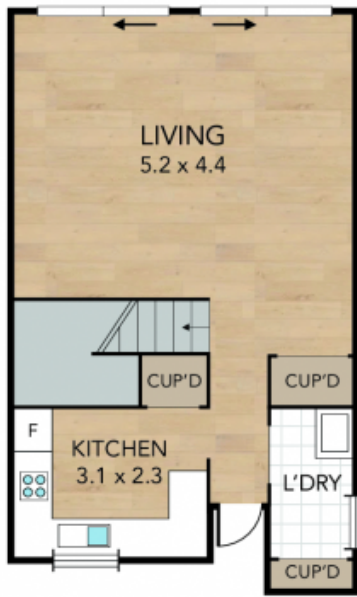
**Joel Osborn**

0432 566 245

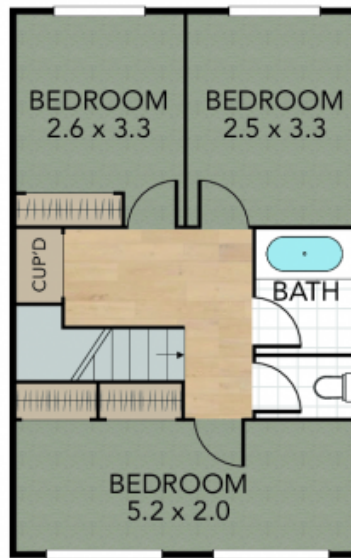
# 14/4 Mosman Place, Raymond Terrace

Internal 90 m<sup>2</sup> External 16 m<sup>2</sup> Land Size m<sup>2</sup>

3 x  1 x  1 x 



GROUND FLOOR



FIRST FLOOR



NOTE: Every precaution has been taken to verify the accuracy of the above details. However, prospective purchasers are advised to make their own enquiries.