



**82 Joseph Sheen Drive Raymond Terrace, NSW**

 4    
  2    
  2

**Beautiful bushland views**

Set on 535m<sup>2</sup>, this spacious four-bedroom home is situated in a great subdivision, taking in spectacular views of the bush.

This fantastic property benefits from its north facing aspect and is just a short walk to schools and public transport.

Long term tenants who would like to stay on.

**Key features include:**

- Large main bedroom, which features a walk-in robe, ceiling fan and ensuite.
- Remaining three bedrooms are all generous and feature built-in robes. One has a ceiling fan.
- Open plan kitchen, dining and living room includes floor tiles and air conditioning.
- Spacious media room.

**Price:** \$647500

**Council Rates:** \$385.00 p/q



**Joel Osborn**

0432 566 245

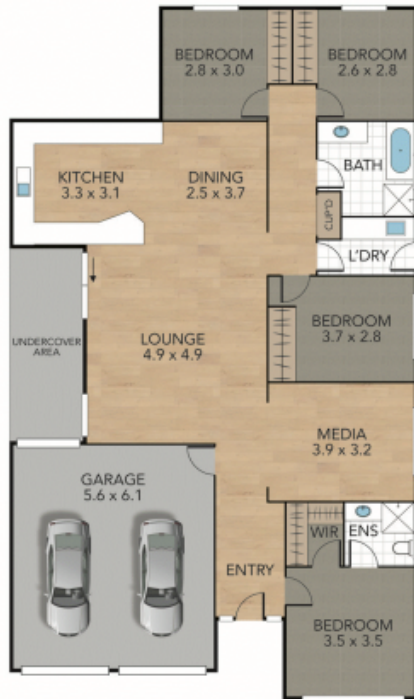
**Liam Osborn**

0447 822 460

# 82 Joseph Sheen Drive, Raymond Terrace

Internal 175 m<sup>2</sup> External 362 m<sup>2</sup> Land Size 537 m<sup>2</sup>

4 x  2 x  2 x 



GROUND FLOOR



SITE PLAN

NOTE: Every precaution has been taken to verify the accuracy of the above details. However, prospective purchasers are advised to make their own enquiries.