

13/4 Mosman Place Raymond Terrace, NSW

2
 1
 1

Walk to everything!

This two-bedroom unit is situated just walking distance to schools, parks, Lakeside Shops, and the Tavern. The two-storey unit has good-sized bedrooms with a central bathroom upstairs. The open plan dining and living room downstairs has a double sliding door out to the generous courtyard that is perfect for entertaining.

All prospective buyers will benefit from its proximity to Newcastle, Maitland, Pacific Highway and Airport, making it a sought-after place to live or invest.

This property is currently leased for \$380 per week to a long term Tenant wanting to stay on.

Downstairs features include:

- Vinyl flooring in living room.
- Great size laundry with extra toilet.

Price: \$330000

Council Rates: \$271.00 p/q

Water Rates: \$304.50 p/q

Strata Rates: \$905.30 p/q



Joel Osborn

0432 566 245

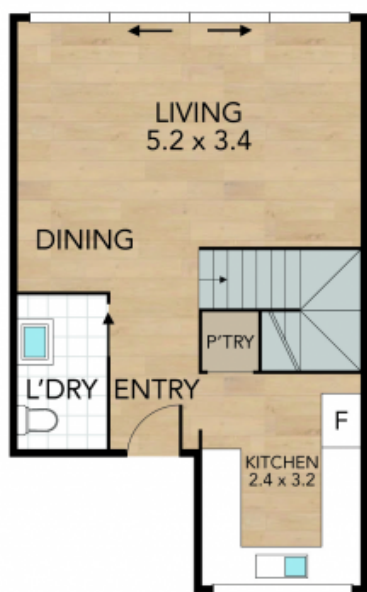
Liam Osborn

0447 822 460

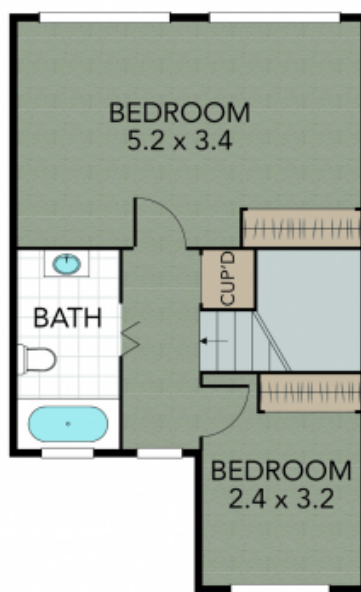
Internal 82 m² External m² Land Size m²

2 x  1 x  1 x 

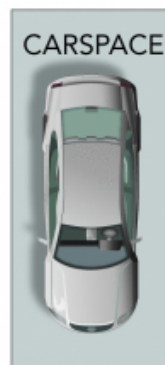
13/4 Mosman Place, Raymond terrace



GROUND FLOOR



FIRST FLOOR



NOTE: Every precaution has been taken to verify the accuracy of the above details. However, prospective purchasers are advised to make their own enquiries.