



89 Alton Road Raymond Terrace, NSW

 4
  2
  2

Stunning elevated rural views and newly landscaped backyard!

Set on 651m2, this newly renovated property ticks all the boxes for a new family to call home. In a great location in Roslyn Estate and has purple Jacaranda trees dotted throughout the suburb and rural views.

The home features 4 spacious bedrooms (3 with built-in robes) and an ensuite to main.

The family bathroom has had a makeover and is centrally located between the bedrooms.

The home has a double lock up garage with remote roller door and in a great neighbourhood

Price: \$660000

Council Rates: \$392.00 p/q



Tracy Jonovski

0418 216 275

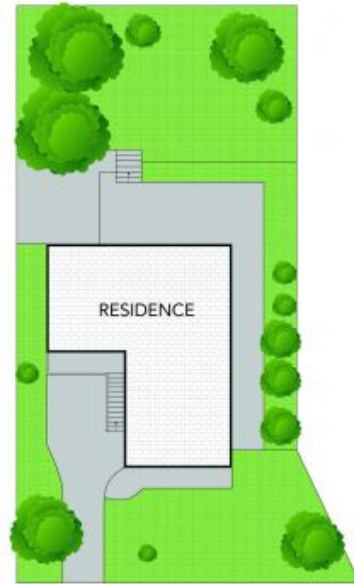
Tracy Jonovski

0418 216 275

89 Alton Road, Raymond Terrace

Internal 124 m² External 525 m² Land Size 649 m²

4 x  2 x  2 x 



NOTE: Every precaution has been taken to verify the accuracy of the above details. However, prospective purchasers are advised to make their own enquiries.