



1/171 Benjamin Lee Drive Raymond Terrace, NSW

3 1 1

Private Living

Situated in a sought-after part of Lakeside, this beautiful three-bedroom unit is tucked away and benefits from its private location. Perfect for investors, first home buyers and downsizers searching for comfort and affordability in a great part of town.

Currently leased by a great tenant, who is happy to continue leasing the property.

Key features include:

- Three good size bedrooms with built-in robes.
- Open plan kitchen and dining room which features vinyl flooring. The modern kitchen includes a stainless steel rangehood, cooktop, and oven.
- Reverse cycle air conditioning in the dining room.
- Spacious bathroom features a shower and bath, with a separate toilet and vanity.
- Single garage with internal access.

Price: \$475000

Council Rates: \$319.00 p/q



Liam Osborn




0447 822 460

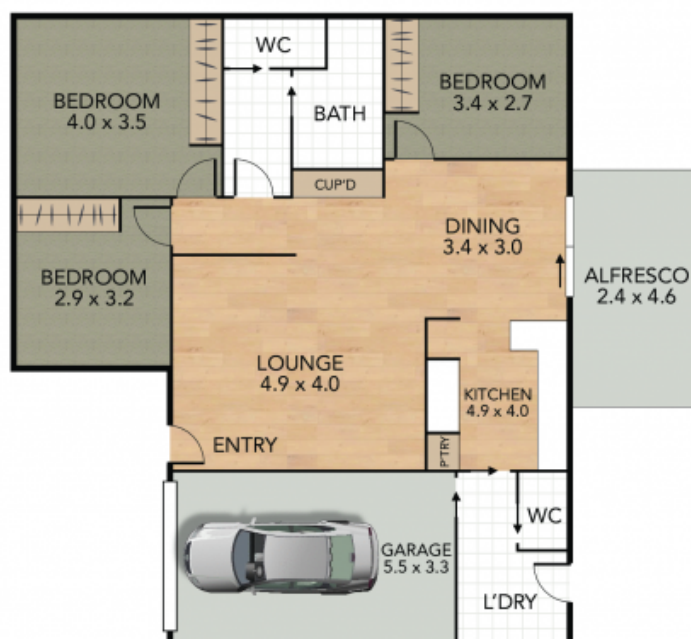
Joel Osborn

0432 566 245

Internal 120 m² External 11 m² Land Size m²

1/171 Benjamin Lee Drive, Raymond Terrace

3 x  1 x  1 x 



NOTE: Every precaution has been taken to verify the accuracy of the above details. However, prospective purchasers are advised to make their own enquiries.