



78 Joseph Sheen Drive Raymond Terrace, NSW

 4
  2
  2

Quiet and peaceful, with an amazing view.

Set on 693m², this spacious four-bedroom home is situated in a popular part of town, taking in beautiful views of the public reserve. All prospective buyers will benefit from its convenient location that is close to Irrawang High School, bus stops and walking/ cycle way.

Key features include:

Main bedroom features a ceiling fan, new carpet, walk-in robe and an ensuite that has a shower, toilet, and vanity.

Remaining three bedrooms have built-in robes, new carpet and ceiling fans.

Large lounge room has a ceiling fan.

Open plan kitchen, dining, and living room. The kitchen features a gas cooktop, dishwasher, rangehood, oven and views of the bushland.

The living room has a reverse cycle air conditioner and a ceiling fan.

7.8kW Solar system.

Natural gas connection supplies hot water system, cooktop, heating point in lounge room and

Price: \$650,000

Council Rates: \$385.00 p/q



Liam Osborn

0447 822 460

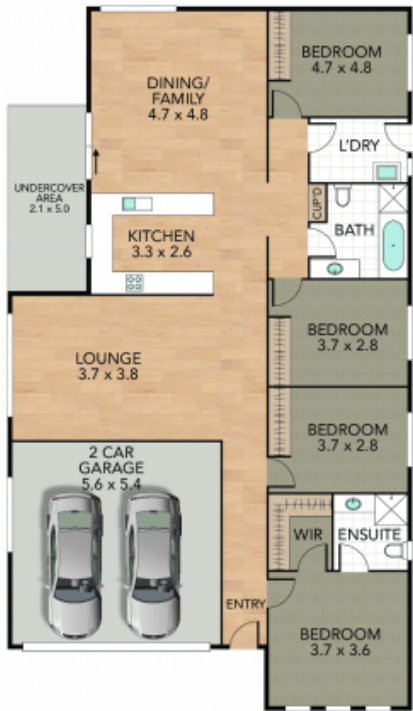
Joel Osborn

0432 566 245

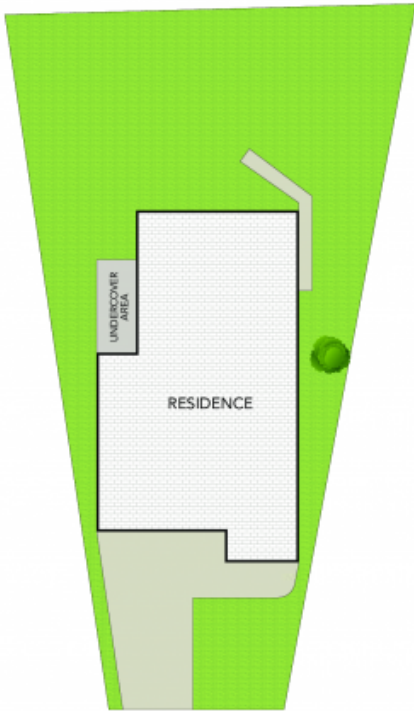
78 Joseph Sheen Drive, Raymond Terrace

Internal 173 m² External 520 m² Land Size 693 m²

4 x  2 x  2 x 



GROUND FLOOR



SITE PLAN

NOTE: Every precaution has been taken to verify the accuracy of the above details. However, prospective purchasers are advised to make their own enquiries.