

7/3-5 Mosman Place Raymond Terrace, NSW

3 1 1

Comfort and Space

This 3-bedroom unit is situated in a family friendly part of Lakeside and is just a short walk to schools, park, shops, and the Tavern. It is also a 5-minute drive to the CBD and 15 minutes to RAAF Base.

The two-storey unit has good-sized bedrooms with a central bathroom upstairs. The kitchen opens to the dining room and there are two living areas on the ground floor. The garage has internal access through the laundry and the complex has a shared swimming pool area.

Downstairs features include:

- Spacious front lounge room.
- Separate back living and dining room with access to the rear courtyard.
- Reverse cycle air conditioning.

Price: \$442000



Joel Osborn

0432 566 245

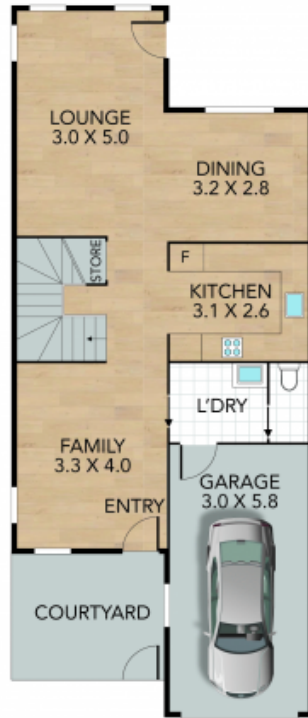
Liam Osborn

0447 822 460

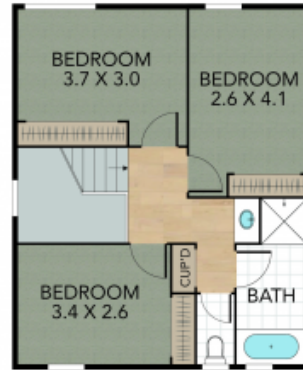
7/3-5 Mosman Place, Raymond Terrace

Internal 112 m² External 28 m² Land Size m²

3 x  1 x  1 x 



GROUND FLOOR



FIRST FLOOR

NOTE: Every precaution has been taken to verify the accuracy of the above details. However, prospective purchasers are advised to make their own enquiries.