



35 Martens Avenue Raymond Terrace, NSW

4 2 2

Great part of town!

Set on 565m², this beautiful brick and tile home ticks all the boxes and is situated in a great family friendly estate. Its conveniently located close to Irrawang High School, Irrawang Public School, Grahamstown Public School, Lakeside Shopping Village and sporting complex, making it a highly desirable lifestyle.

Key features include

Spacious main bedroom, which features a walk-in robe and ensuite.

Large main bathroom features a vanity, toilet, bath, and shower.

Good size laundry.

Remaining three bedrooms are a good size and have built-in robes.

Open plan kitchen, dining and living room. The kitchen features a gas cooktop, rangehood, oven and dishwasher.

Tiled floors in the entry, hallway, kitchen, dining and living room.

Double garage with internal access.

Price:

\$610 pw



Mecca Powell

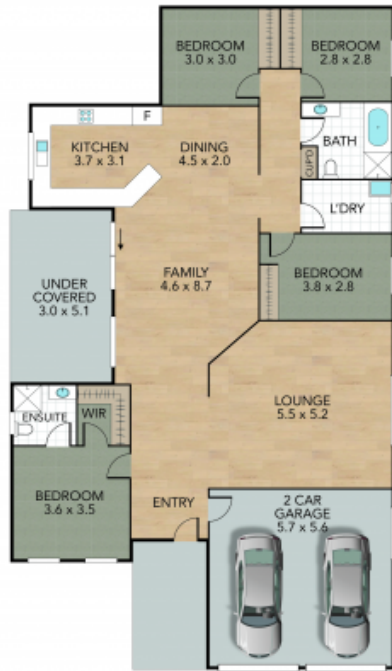
35 Martens Avenue, Raymond Terrace

Internal 193 m² External 375 m² Land Size 568 m²

4 x  2 x  2 x 



NORTH



GROUND FLOOR



SITE PLAN

NOTE: Every precaution has been taken to verify the accuracy of the above details. However, prospective purchasers are advised to make their own enquiries.