

3 Manning Avenue Raymond Terrace, NSW

 4  2  2

Great home, in a central part of town

Set on 648m², this great size home is located close to schools and the Lakeside Shopping Village, in a sought-after part of Raymond Terrace.

This beautiful home has four generous bedrooms and two separate living areas which create a real sense of space and make it appealing to all types of buyers.

Key features include:

- Large main bedroom features a walk-in robe, ceiling fan, air conditioning and ensuite with shower, toilet, and vanity.
- Remaining three bedrooms have ceiling fans and built-in robes.
- Front lounge room has air conditioning and a sliding door to the alfresco area.
- Carpet in all bedrooms and lounge room.
- Tiles in entry, kitchen and living room.
- Large main bathroom includes a shower, bath, and vanity.
- Spacious laundry.

Price: \$740000



Joel Osborn

0432 566 245

Liam Osborn

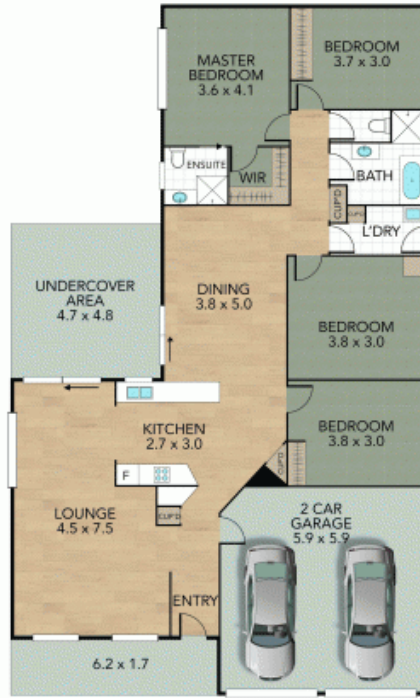
0447 822 460

3 Manning Avenue, Raymond Terrace



Internal 174 m² External 473 m² Land Size 647 m²

4 x 2 x 2 x



GROUND FLOOR



SITE PLAN

NOTE: Every precaution has been taken to verify the accuracy of the above details. However, prospective purchasers are advised to make their own enquiries.