



9/179 Adelaide Street Raymond Terrace, NSW

2
 1
 1

Walking distance to town

This well-presented unit will be perfect for first home buyers, downsizers, and investors. Immaculately maintained, in a friendly 12-unit complex, with a single garage and large courtyard and situated within close proximity to Raymond Terrace CBD, Schools and public transport, making it a must-see opportunity.

Key features include:

- Two spacious bedrooms with built in robes, one with a ceiling fan.
- Modern kitchen with cooktop, rangehood, wall oven and stone benchtops.
- Open plan kitchen and lounge room has air-conditioning.
- Linen cupboard.
- Shutters on windows.
- The bathroom features a shower, vanity, and toilet.
- Spacious laundry.

Price: \$422500

Council Rates: \$215.00 p/q

Strata Rates: \$431.80 p/q



Liam Osborn

0447 822 460

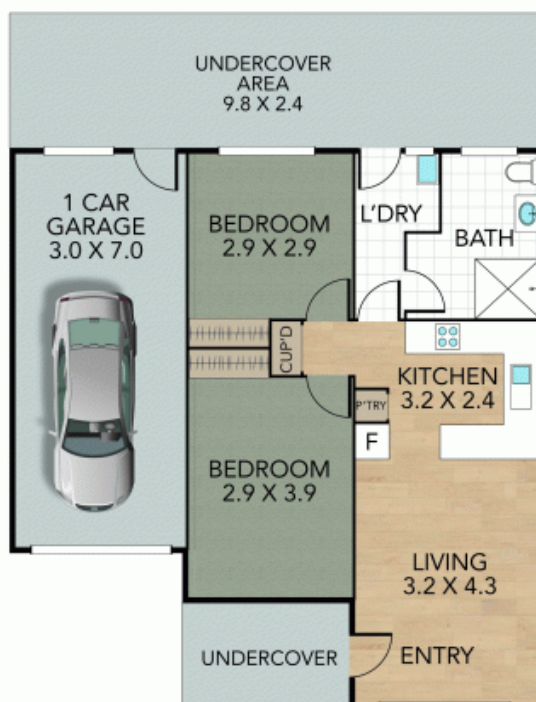
Joel Osborn

0432 566 245

9/179 Adelaide Street, Raymond Terrace

Internal 78 m² External 28 m² Total m²

2 x  1 x  1 x 



NOTE: Every precaution has been taken to verify the accuracy of the above details. However, prospective purchasers are advised to make their own enquiries.