



4 Milkhouse Drive Raymond Terrace, NSW

 4  2  2

Modern, New and ready to move into

Immaculately presented, this outstanding residence offers a relaxing lifestyle. This home is brilliantly positioned and overlooks the reserve at the front. The property immediately draws you in with its striking interiors, relaxed atmosphere and spacious open plan living areas combining with flawless entertaining space inside and out.

Key features include:

Spacious main bedroom with a beautiful ensuite with separate toilet, walk-in robe, and ceiling fan.
Remaining three bedrooms are good size with built-in mirrored robes, ceiling fans and plantation shutters.
Large bathroom includes stand-alone bath, rainfall showerhead with separate toilet.
Centrally located media room.

Price: \$780000

Council Rates: \$239.00 p/q

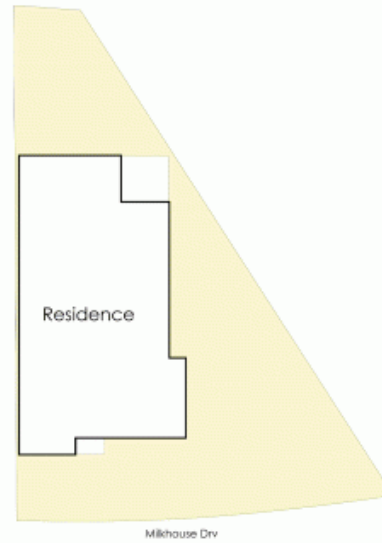
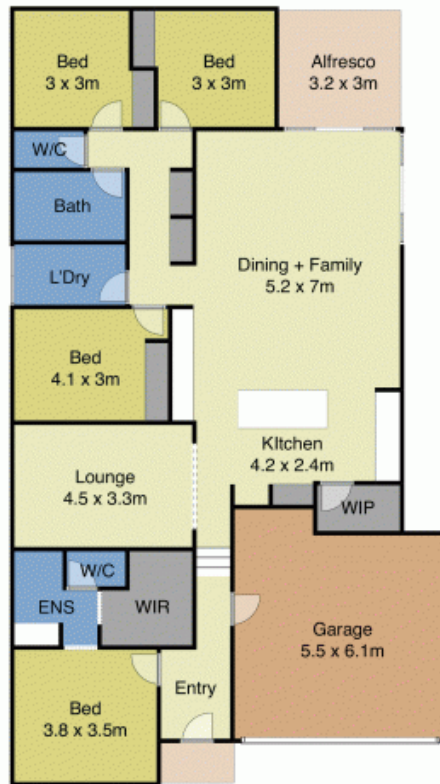


Joel Osborn

0432 566 245

Liam Osborn

0447 822 460



OSBORN
GEORGE

4 Milkhouse Drive, Raymond Terrace



NOT TO SCALE

Disclaimer: This plan and measurements are for informational purposes only. We make no warranties or representations, express or implied, as to the accuracy of the data. Independent detail verification is recommended.