



## 84 Bede Street STROUD, NSW

5 3 2

### MOUNTAIN VIEW AND TOP NOTCH ADDRESS WITHIN REACH OF SYDNEY

CHISLEHURST gives views of picturesque Barrington Tops only two hours from Sydney

This is a truly unique retreat that takes full advantage of views into the beautiful Karuah valley and

the Barrington Tops beyond. This architect-designed home sits in the hills above the quaint historic

village of Stroud amid 1.10 hectares (2.718 acres) of stunning gardens. Well maintained, this home was built in 1996 and offers generous proportions with

multiple living zones. (Approximately 405 squares of internal living over 2 levels) Facing due north ensures that most rooms are flooded with natural light and

winter sunshine. The verandah, which extends the full length of the front of the home, protects from summer sun. A louvered vergola roof opens up to let in full

winter sun to make the most of all year round alfresco dining. The master bedroom with large windows taking full advantage of the superb views over the

valley, features a dressing room and well-proportioned ensuite 2 further queen sized bedrooms

**Price:**

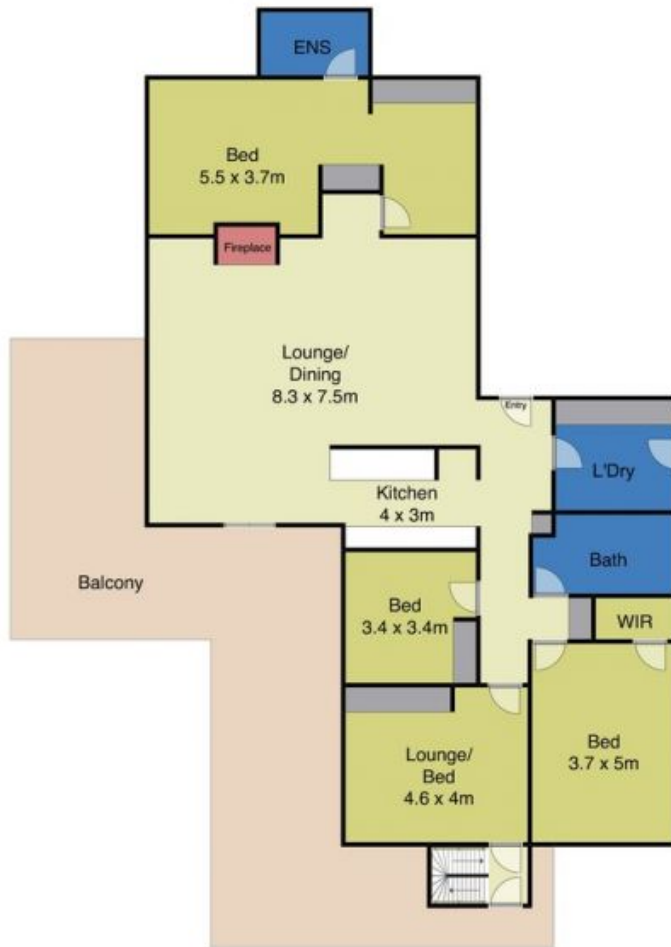
\$850,000 - \$920,000



**Tracy Jonovski**

0418 216 275

## Upper Level



## Lower Level

