



34 Alton Close RAYMOND TERRACE, NSW

 3  1  1

What a location!

This fantastic three bedroom home is located in a quiet street, benefiting from its close proximity to the CBD, schools and park.

Whether you are an investor, first home buyer or second home buyer this property is a must see.

Key features include:

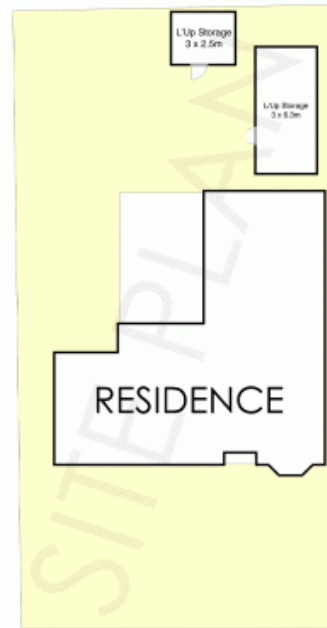
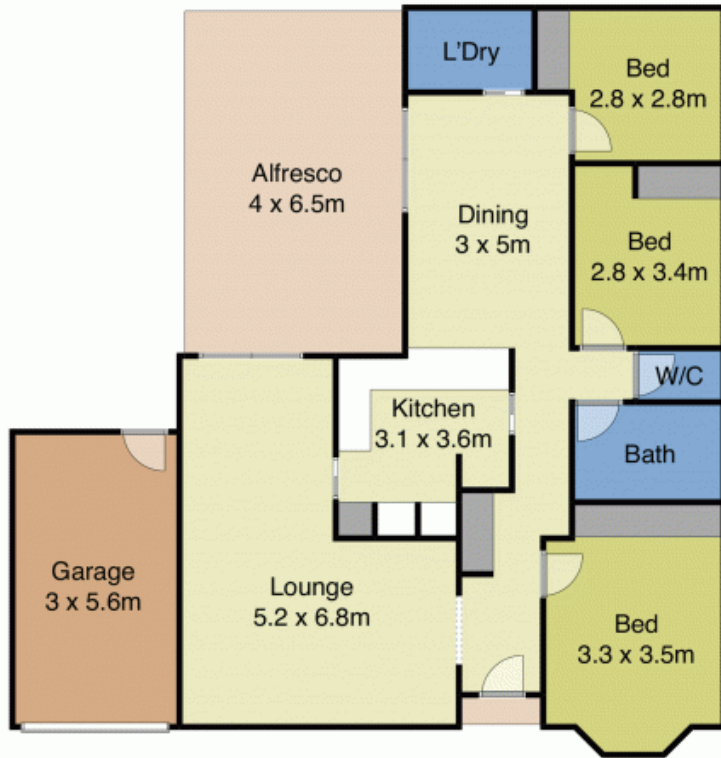
- Large main bedroom featuring a built-in robe and ceiling fan.
- Bedroom two & three are both good size and feature built-in robes.
- Great size kitchen which includes white dishwasher, glass cooktop and stainless-steel oven.
- Spacious bathroom with a separate toilet. There is also a skylight in the bathroom.
- Living area at the back of the home.
- Large outdoor area.

Price: \$370,000 - \$390,000



Joel Osborn

0432 566 245



Alton Rd



34 Alton Road, Raymond Terrace



NOT TO SCALE

Disclaimer: This plan and measurements are for informational purposes only. We make no warranties or representations, express or implied, as to the accuracy of the data. Independent detail verification is recommended.