



27 Bennett Place RAYMOND TERRACE, NSW

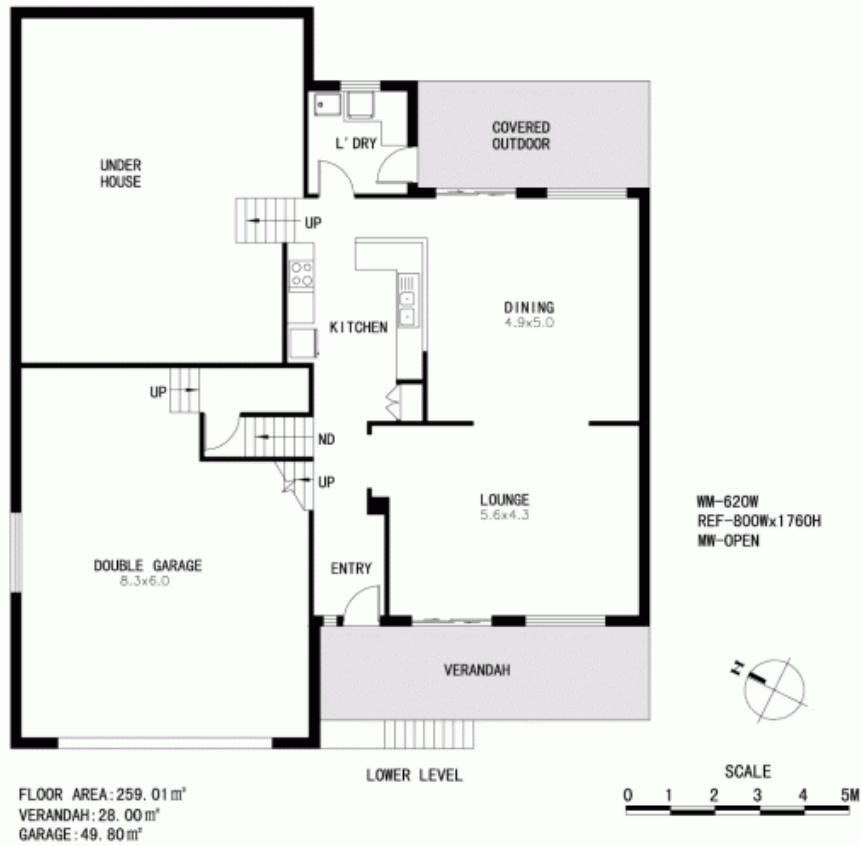
 4  2  2

FIVE STAR HOME

As new condition and style of it's own with split level design featuring 4 big bedrooms with robes and ensuite plus walk in robe to the oversized master suite. Spacious living area with beautiful polished floors which surround the delightful central kitchen with granite tops, covered verandahs front and rear, and a manicured terraced yard. Internal entry from the auto double garage and workshop.

Price: \$420,000

Osborn George



FLOOR AREA: 259.01m²
 VERANDAH: 28.00m²
 GARAGE: 49.80m²

ADDRESS: 27 BENNETT PLACE RAYMOND TERRACE

Disclaimer: Plan shown only indicative of layout/furniture/landscaping. Plans are for advertising purposes only and should not be considered exact. National Pty Ltd accepts no responsibility for errors in this plan.